



# The Souvenir Card JOURNAL

THIRD QUARTER 2016

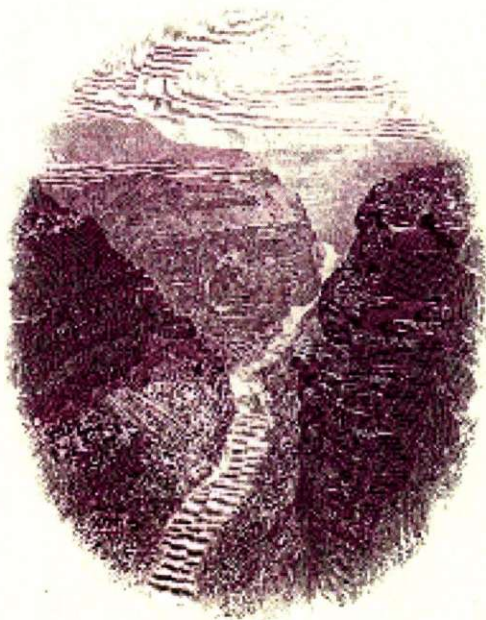
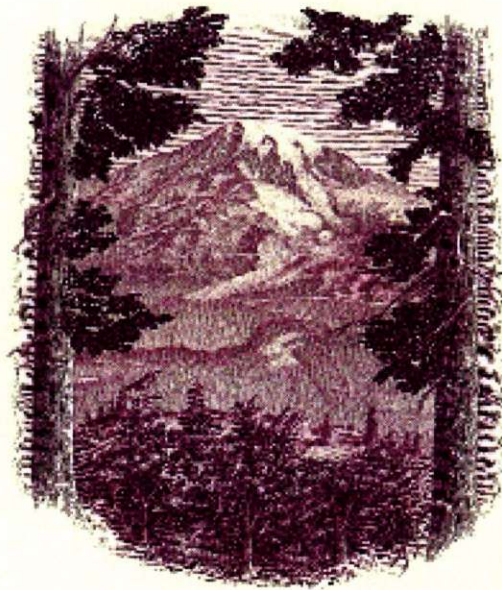
VOLUME 36

NUMBER 3

THE OFFICIAL PUBLICATION OF THE SOUVENIR CARD COLLECTORS SOCIETY











# The Souvenir Card JOURNAL

Third Quarter 2016, Volume 36, Number 3



## Board of Directors

*President & Treasurer*  
William V. Kriebel (27)  
1923 Manning Street  
Philadelphia, PA 19103-5728  
215.735.3697  
kriebewv@drexel.edu

*Vice President*  
A. Stephen Patrick (1397)  
2729 Cloudcroft Drive  
Apopka, FL 32703-7719  
612.922.0609  
spatrick3@cfl.rr.com

*Publicity Director:*  
Lee Quast (849)  
P.O. Box 1301  
High Ridge, MO 63049  
amerishow@gmail.com

*Editor & Publisher - SCJ:*  
William V. Kriebel (27)  
1923 Manning Street  
Philadelphia, PA 19103-5728  
215.735.3697  
kriebewv@drexel.edu

*President Emeritus:*  
Curtis D. Radford, M.D.(1)  
920.420.9528 (Evening)



(see page 15)

## CONTENTS

## Author Page

Reproduction of an ABNCo "Paste-Up" 1952 Brazil Souvenir Card	C1
National Parks on Souvenir Cards	Greg Alexander C2
As I See It	William Kriebel 2
National Park Service Centenary—2	Greg Alexander 3
S.C.C.S. Auction No. 37	William Kriebel 6
Disney Cards	Steve Patrick 10
Prices Realized: S.C.C.S. Auction No. 36	William Kriebel 11
From the BEP "Resources"—2	William Kriebel 11
Visual Reference Update	William Kriebel 18
Members Exchange	Membership 18
CSNS/Mike Bean Souvenir Card	Steve Patrick 19
Some Foreign Cards	Greg Alexander 20
F1983G	Greg Alexander 23
Cards Available and Forthcoming Shows	William Kriebel 24
National Parks on Souvenir Cards	Greg Alexander C3
SCCS Officers at World Stamp NYC	Steve Patrick C3
ABNCo "Paste-Up"	Christies Robson Lowe C4

**Printing deadlines** for ads, articles, illustrations, comments, etc., is the first day of the month before the Quarter, e.g., 1 September 2016 for the Fourth Quarter 2016 issue. Your cooperation in meeting these goals is appreciated. Editor.

**Membership information** and Dues (\$25/yr.; \$45/2 rs.; \$65/3 yrs., paid to "S.C.C.S.") should be sent to the **Treasurer**. Requests for back issues and information concerning this Journal, including submission of articles and advertisements and rates for same should be addressed to the **Editor**. Thanks!



On the cover, I illustrate a collage produced in the ABNCo's "art school." Postage and revenue stamps were cut to shape and mounted along with decorative borders and vignettes. The reason(s) for doing this have never been fully explained, but the results are really beautiful! This illustration is from a 1952 Brazil *folinha* (souvenir card). A collection of similar pieces, from an assortment of countries which were ABNCo clients, was offered by **Christie's Robson Lowe** in a September 1988 auction, from the ABNCo's archives, one of which is reproduced on the back cover.

♦

Not much in the way of response regarding support for, or help in, evolving a SCCS website. i.e., two replies! I can't do it myself, I have neither the talent or time—a lot of which is spent in producing the item which you are holding in your hands! I'll still accept offers of support/interest!

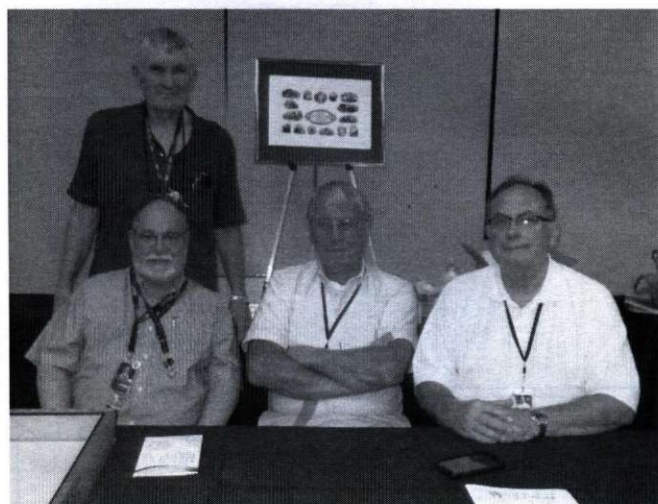
♦

This issue includes our annual souvenir card, another superb product by **Mike Bean**. It is our salute to the National Park Service.

♦

The BEP has reissued the "Defenders of Freedom" series. This time, with different MPCs, and without a date (previously "2014"). The intent, as I understand it, will be that there will be no "terminal" date for the series, i.e., they will be available for an indefinite period of time. The response to the original series was apparently overwhelming! It certainly honors those who put their lives on the line by protecting ourselves and our values!

♦



SCCS members at IPMS, 2-4 June 2016: (standing) John Wilson; (seated l. to r.) Ed Barnes (visitor), O. T. Thompson and Steve Costner. OT and Steve were at the table for the majority of the show.

I went to the World Stamp Show in NYC on 3 June 2016, and was pleased to find others who shared my interest in souvenir cards (see p. C3). **Steve Patrick** has put together an article on some of the items he found at the show, which I will include in the issue.

I was surprised to find a booth for ABnote, the remaining operation of the American Bank Note Company. They are now distributing postage stamps for the USPS, as well as doing "smart card" business for banks and credit unions, and secure documents like drivers licenses, voter registration cards, id cards and passports. Their booth displayed some of their old souvenir cards, intaglio prints and, ironically, commemorative panels that they originally produced for the USPS! (None of which were for sale!) They held a free lottery several times a day with the winners receiving a mint copy of *The Story of American Bank Note Company*, by William H. Griffiths, 1959, which in such beautiful condition probably retails for \$100±. I don't know how they were stored for 57 years and still looked brand new! Ashton-Potter also had a set-up in the "printer area," but had nothing like they did in Washington in 2006.

The show was overwhelming (187± dealer's booths, 59 society booths, 42 postal administrations, and over 4,100 exhibit frames) and there seemed to be a lot of participants roaming the floor, suggesting that philately is not dying, or they were just collecting "freebies"! One day was definitely not enough!!

♦

In my role as "Treasurer," I am sorry to report that of the 96 dues-paying members, 5 have yet to renew for this year, i.e., 2016. As a reminder, we operate on a calendar year basis, so, about the time you receive the next (4th Quarter) issue, it'll be time to plan your membership renewal. A reminder: above your name on the address label, there are two numbers. The one on the left is the year your membership expires, the one on the right is your membership number. It is, at least to me, interesting to note that our most recent new member is "2122", although there are only 137 on our mailing list (counting the 5 mentioned above).

We have lost members to age, change of interest, and quite a few when the BEP was no longer allowed to print cards reproducing old bank notes. To my knowledge, this situation has never been explained, and I had pressed to think that anyone would accept copies or "cut-outs" as viable tender. If so, they'd probably also accept MONOPOLY money!

♦



# NATIONAL PARK SERVICE CENTENARY—2 Greg Alexander

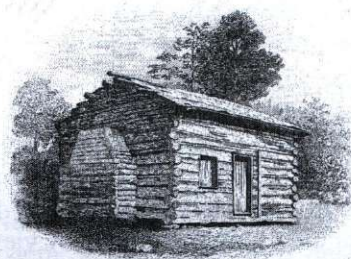
[Additional illustrations in color: Page C2 top, **B-166** with Bridal Veil Falls (left), Mt. Rainer (center) and El Capitan (right); bottom, **B-172** with western view of Grand Canyon (left), Mount Rockwell (top, right) and Mammoth Hot Springs (lower, right); page C3, **B-174**, with Niagara Falls (top, left), Yosemite Valley (lower, left), and Montezuma Castle (right). Ed.]

Now we head out of the major cities. West of Boston, Minute Man National Historic Park stretches between Concord and Lexington, MA. This isn't a site most collectors would tie to a souvenir card. But take a look at **B189**, the Bureau's 1994 savings bond campaign card. On it appears the iconic Minute Man statue, which continues to make a stand on the park's west end near the Old North Bridge. War Savings Stamps with the statue are on two others in the savings bond card series, B162 and B175.



AMERICAN NUMISMATIC ASSOCIATION  
National Money Show  
Portland, Oregon - March 2009

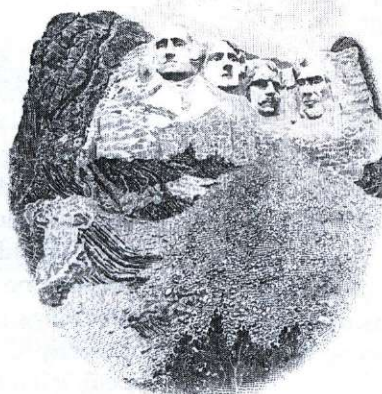
"Lincoln Bicentennial Series"  
"Humble Beginnings"



The copyright of this print is reserved by Title 18, U.S.C. which prohibits the unauthorized reproduction, circulation or use of any part of any postage stamps, or other securities of the United States.

The Lincoln Memorial is not the only Park Service unit devoted to our 16th president. Lincoln Birthplace National Historic Park, near Hodgenville in central Kentucky, houses a rebuilt representation of the log cabin where he was born. You'll find this depicted on **B291**, the first of the BEP's 2009 Lincoln Bicentennial series.

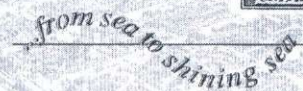
In South Dakota's Black Hills stands Mt. Rushmore National Memorial, featured on **B242**. At the time of its initial dedication in 1927, work on the massive sculpture was just starting; it wouldn't be finished until 1939. Sculptor Gutzon Borglum originally planned to carve the four presidents to their waistlines, but Congress decided to fund only the heads. The total cost of the project was just under \$1 million.



smaller form on **B266**, where it's tied together with a commemorative stamp and a vignette of the Wright Flyer getting airborne. The same flyer vignette shows up on B36 and B239.

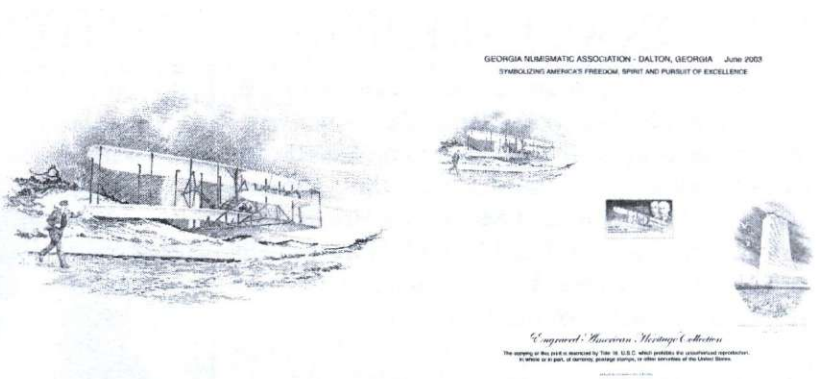
By the time Montezuma Castle Nat. Monument was established in central Arizona it had already been stripped of many native artifacts by pothunters. The Antiquities Act of 1906 enabled presidents to set aside land for protection of structures from damage and looting. That year, Teddy Roosevelt used the act to create four national monuments (Devil's Tower was the first), including Montezuma Castle in New Mexico. The Pre-Columbian cliff dwellings were last occupied around

Another out-of-the-way spot is Golden Spike National Historic Site, on Promontory Summit near the north end of Utah's Great Salt Lake. This site is commemorated in the form of a block of four stamps on **B225**. I was interested to learn



OKPEX '98  
Oklahoma City Stamp Club  
Oklahoma City • May 1998

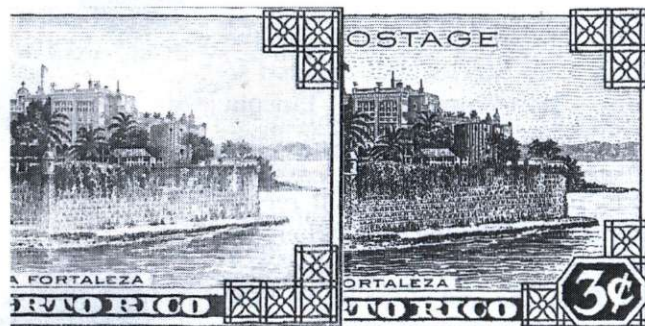




1400; a view of them is found on B174, the final card in the BEP's wonderful three-card National Parks special series, issued in 1993.

B174 also features a view of Niagara Falls from below. designated by Congress in 2008, Niagara Falls National Heritage Area encompasses a somewhat fuzzy geography "from the western boundary of Wheatfield, New York to the mouth of the Niagara River on Lake Ontario." In theory, this includes the falls themselves, but in practice the NPS doesn't administer any territory or landmarks within sight of the falls. Early in the 19th century, unchecked private development around Niagara Falls turned the area into a sprawling tourist attraction. This was later a significant argument for Congress to preserve certain lands from exploitation so other natural wonders might avoid Niagara's fate. A view of the falls from the Canadian side is shown on F1990F as well

as on a banknote featured on SO16. The only represented NPS unit outside the 50 states is San Juan National Historic Site in Puerto Rico. The old city walls, three forts, and other structures are also a World Heritage Site. It is the oldest European historic area overseen by the NPS; one section dates back to 1533. San Juan Gate, the historic entrance to the city, is shown on B42, along with a sentry box at Castillo San Cristóbal on the central stamp of PS41. [It is interesting that in the earlier card the BEP chose to obliterate the "value," and eliminated "U.S. Postage," but not in the Postal Service version. Ed.]



Next, the National Parks themselves – we'll take them in chronological order of their official designation. As I mentioned at the start of this article, the first was Yellowstone National Park, created in 1872 during President Grant's administration. A view of the travertine formations at Yellowstone's Mammoth Hot Springs is found on B172. Given Yellowstone's popularity (3.5 million visitors a year) and visual appeal, it's a bit disappointing this park only makes one appearance on a souvenir card. Yellowstone is one of the largest national parks, with 3,468 square miles spread across Wyoming, Montana and Idaho.

Only four national parks were established before 1900 and, of those, Sequoia NP is the only one absent from souvenir cards. Yosemite National Park in central California was created in 1890, after years of lobbying by John Muir to save the valley from being dammed and turned into a reservoir. Today, it is the third most visited national park in the country. Bridal Veil Falls and the granite face of El Capitan are



captured on **B166** and a view from the valley floor appears on **B174** and **B277**. A similar view of El Capitan is found on the 1¢ stamp of the 1934 National Park series, featured on **B10** (right).



The last national park established in the 19th century was Mt. Rainier NP in 1899. Its 14,411-foot peak is easily seen from Seattle, Washington, about 60 miles to the northwest. 27 majors glaciers flow down its slopes, and the alpine environment is popular with hikers, mountain climbers, and wildlife enthusiasts. A tree-framed image of Mt. Rainer appears on **B166**.

Mesa Verde National Park in southwest Colorado was established in 1906 by President Roosevelt at the same time as he signed the Antiquities Act. Like Montezuma Castle, the area had become known to curio seekers and was in need of protection. It was the first national park centered around man-made structures, preserving more than 600 cliff dwellings and thousands of ancient sites built by the native Pueblo people between 600 and 1300 AD. A view of Cliff Palace, the park's most impressive ruin, is on the 4¢ stamp of the 1934 National Park series, included on **PS21**.



**COLORADO**

August 1, 1976



"THE CENTENNIAL STATE"



When this souvenir card is issued, became the 38th State in the Union. Colorado is the only state to have achieved this feat. Thus, in 1976 Colorado celebrates the Centennial of its own Statehood and the Bicentennial of the United States.

Colorado Centennial-Bicentennial Commission representational National Park symbolize the Native American presence in the West. The Rocky Mountain expeditions recall the westward expansion and future are signified by the Colorado State Flag on the back of the card.

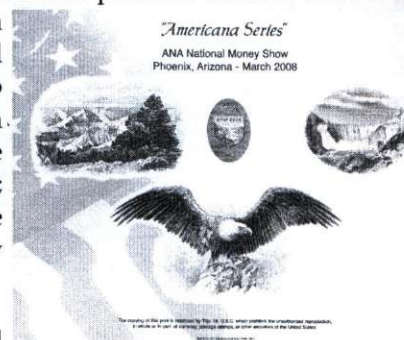


Benjamin F. Baiter  
Postmaster General

The copyright of this post is protected by Title 18, U.S.C. which prohibits the unauthorized reproduction, in whole or in part, of any part of the post, including the design or other features of the United States.

Established in 1910, Glacier National Park spans more than 1 million acres in northwest Montana. The park is a photographer's dream, with pristine lakes, scenic glacial valleys, and plentiful wildlife from mountain goats to moose. Along the Continental Divide, Mt. Rockwell (9272 ft.), depicted on **B172**, is in one of the more remote sections of the park, accessible only by hiking trail. Glacier also boasts more historic park lodges and chalets than any other, including the rustic cathedral-like Glacier Park Lodge.

With nearly 5 million annual visitors, Grand Canyon in northern Arizona is the second most popular national park, behind only Great Smoky Mountains NP (which has no entrance fee). Spanish explorers first documented the iconic landscape in 1540, but it took until 1919 for Congress to designate it a national park, after more than a decade of resistance by land and mining interests. The Colorado River winds more than 270 miles through about 1,900 square miles of NPS land; in places, canyon walls are a mile deep. Only Hell's Canyon in the Pacific Northwest is deeper, but nowhere near as vast or scenic. Grand Canyon National Park is pictured on three souvenir cards: again on a 1934 National Park series stamp (2¢) on **PS54**; on **B172** from the BEP's 1993 series; and **B289**, for the 2008 ANA show in Phoenix.



Lastly, we head South. The expansive tropical swamp known as the Everglades didn't get much public awareness until the 1920s during the Florida land speculation boom. Fortunately, Congress moved to establish Everglades National Park in 1934 to protect the unique ecosystem. It has since been designated a World Heritage Site and International Biosphere Reserve. The park's 1.5 million acres include mangrove stands, pine savannas and marine estuaries, all home to more than 30 protected species. Everglades NP is commemorated on a 1947 3¢ stamp that appears on **B288**.



Is that all? No doubt I've missed a few. But when you consider National Parks Service souvenir cards collectively, they represent one of the largest topical themes in the hobby. Who knew?

This year, the National Park Service is offering many "fee free days" when the public can enter any park or facility at no cost. This includes National Park Birthday Weekend (August 25-28). You can learn more on their website at :

[www.nps.gov/findapark/feefreeparks.htm](http://www.nps.gov/findapark/feefreeparks.htm).

Thanks NPS – and happy 100th birthday!



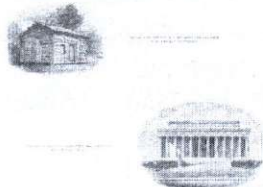


011

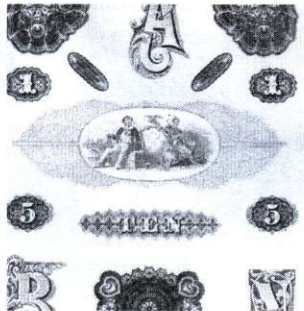
World Columbian Stamp Expo '92  
Chicago Illinois - May 27 - 31, 1992



029



043

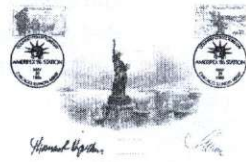


054

INTERNATIONAL PHILATELIC EXHIBITION  
WASHINGTON, D.C. - JUNE 20-24, 1962



065 ex



016

American Stamp Dealers Association  
Memorabilia Stamp Kings Guild  
200 West 10th Street, New York, N.Y. 10011



034



044



055

INTERNATIONAL PHILATELIC EXHIBITION  
WASHINGTON, D.C. - JUNE 20-24, 1962



065 ex

American Stamp Dealers' Association  
New York, New York  
November 7 - 10, 1963



025



036

INTERNATIONAL PLATE PRINTERS, DIE STAMPS  
AND ENGRAVERS OF NORTH AMERICA



046

THE BANK NOTE ENGRAVERS GUILD  
OF WASHINGTON, D.C.



058

INTERNATIONAL PHILATELIC EXHIBITION  
WASHINGTON, D.C. - JUNE 20-24, 1962



065 ex

Random selection of some lots in the current Auction (reduced).



## RULES:

1. Only souvenir cards, intaglio-printed material, or related items are acceptable for consignment. Interested sellers should **contact the auctioneer with any questions BEFORE sending any material**. The fastest contact is by e-mail;

kriebewv@drexel.edu

2. Consignors are responsible for adequately describing their lots, including S.C.C.S. numbers and their minimum bids. Lots must be of a minimum \$2 value.

3. Consignors will pay the postage to ship their lots and postage/insurance for return of unsold material. There is NO consignment fee, however, the S.C.C.S. will retain 10% of the selling price as a commission fee. Care shall be taken to protect any material submitted, but the auctioneer and the S.C.C.S. assumes NO liability and the consignor(s) should verify and/or provide their own insurance coverage.

4. Lots will be sold to the highest bidder. In the case of tie bids, the first bid received shall be awarded the lot. Bids below the "minimum" listed are NOT accepted. Bid in \$1.00 increments only, i.e., NOT "cents." There is NO "buyer's premium".

5. Successful bidders will pay the postage, insurance and packaging for their lots. There is NO buyer's fee, but NO lots will be shipped until the notice for same is paid in full. Payment is expected within ten (10) days of notice. Late payment may result in exclusion from future bidding. Checks should be made out to the auctioneer NOT the S.C.C.S.

6. Returns are acceptable within ten days of receipt of shipment. Please specify the reason for the return (damage, mis-attribution, etc.) Mistakes on the bidder's part are NOT sufficient reason for return.

7. Bids and/or questions may be e-mailed—the quickest way—regular mail, or carrier.

## Abbreviations Used

c	canceled
fdoi	first day of issue
fdsc	first day show canceled
m	mint, as issued
op	overprinted
sc	show canceled
vcc	visitor center canceled
w/env	with envelope
w/o	without
w/xxxx	with Scott numbered stamps

Bidders are asked to **total** the amount of their bids to ensure accuracy of submitting them and in my entering them. Lots marked • are illustrated. Look carefully, bid wisely and early!

Auction No. 37: Bids due 30 JULY 2016.

Lot No. ....Minimum Bid

## SEMI-OFFICIAL (SO)

001. SO-1, SIPEX Miner, m .....	6
002. SO-9, SPMC, m .....	9
003. SO-10, ANA'79, m .....	5
004. SO-11, SPMC, m .....	6
005. SO-12, ANA'80, m .....	5
006. SO-14, ANA, m .....	7
007. SO-15, SPMC, m .....	8
008. SO-17, ANA, m .....	10
009. SO-22, FUN'82, m .....	6
010. SO-23, ANA, m .....	6
•011. SO-24, SPMC, sc .....	16
012. SO-32, ANA, m .....	8
013. SO-33, SPMC, sc .....	10
014. SO-34, ANA, m .....	9
015. SO-38, Liberty (Garske), m .....	6
•016. SO-38, Liberty (Garske) signed by Hipshorn and Slania, sc .....	12
017. SO-43, SPMC/IBNS, m .....	21
018. SO-54, Constitution, m .....	7
019. SO-54, Constitution, c .....	8
020. SO-59, Eight States, m .....	7
021. SO-66, Three States, m .....	7
022. SO-69, North Carolina, m .....	12
023. SO-72, Rhode Island, M .....	18
024. SO-81, ASDA, m .....	8
•025. SO-82, ASDA Special (Brooklyn Bridge), m .....	80
026. SO-83, PNSE, m .....	9
027. SO-88, WCSE, m .....	11
028. SO-89, WCSE, m .....	10
•029. SO-90, WCSE, m .....	35
030. SO-106, ASDA, m .....	9
031. SO-111, MILCOPEX, m .....	9
032. SO-123, ARIPEX, m .....	11
033. SO-132, APS, m .....	9
•034. SO-136, ASDA Mega, m .....	29

## National SCCS (N)

035. N-22, Annual 2010 (NAPEX), sc .....	6
--	---

## Chapter One (W)

•036. W-1, Washington Monument, m .....	14
037. W-62, NAPEX 2010, sc .....	7
038. W-63, NAPEX 2011, m .....	6
039. W-63, NAPEX 2011, sc .....	7



#### Chapter Four (M)

040. M-8, Annual 1996, sc/fdoi 2/1/97 .....	6
041. M-16, Roosevelt, c NY/Oyster Bay .....	8
042. M-45, Longfellow, m .....	5

#### Forerunners (F)

•043. F-1959B, Lincoln proof (?) in brown, m .....	42
•044. F-1966A, SIPEX, m .....	85
045. F-1973B, IPPU 75th, m .....	4
•046. F-1979B, "SNIPES," m .....	53
047. F-1981B, IPPU, m .....	21
048. F-1981B, IPPU, sc .....	19
049. F-1983A, North Berwick, m .....	6
050. F-1983B(c), NYPPU, NY skyline, m .....	18
051. F-1983B(d), Empire State Bldg, m .....	18
052. F-1983B(e), Liberty, m .....	18
053. F-1983B(f), Declaration (blue), m .....	18
•054. F-1983B(g), Lathe patterns, m .....	18
•055. F-1983B(h), nautical vignettes, m .....	18
056. F-1984A, NAPEX, sc .....	5
057. F-1985D, OTTAWA, w/text, m .....	15
•058. F-1986A, "WIRAM," m .....	25
059. F-1986B, Wiran Banquet, m .....	25
060. F-1988C, IPPU 95th, m .....	15
061. F-1991C, GENA w/folder, m .....	11
062. F-1993A, GENA, sc .....	8
063. F-1993H, Centennial Booklet (bound), m .....	100
064. F-1993I, Fraternity, m .....	6
•065. F-2006A, IPPU 90th Convention (Washington) folder 8 cards + invitation, m .....	125

#### Federal Managers (FM)

066. FM-5, ANA 1997, m .....	13
067. FM-5, ANA 1997, sc .....	16
068. FM-7, IPMS 1999, sc .....	16
069. FM-8, IPMS 2000, sc .....	16
•070. FM-9, IPMS 2001, sc .....	16
071. no lot .....	
072. FM-10, IPMS 2002, m .....	13
073. FM-10, IPMS 2002, sc .....	16

#### Michal Bean (MB)

074. MB-37, FUN 2007, m .....	6
075. MB-41, FUN, m .....	6
076. MB-44, FUN, m .....	6
•077. MB-63, CSNS, m .....	6
078. MB-65, Blue Ridge, m .....	6
•079. MB-68, Gettysburg Numismatic, m .....	6
•080. MB-70, CSNS 2016, m (see p.14) .....	6
(Note: More than one copy of this card is being offered, and will be sold in order high/low of bids.)	

#### Fish & Wildlife (BD)

081. BD-2, Snow Goose, w/mint stamp .....	30
•082. BD-2, Snow Goose, c .....	35
083. BD-3, Lesser Scaup, w/mint stamp .....	30
084. BD-3, Lesser Scaup, c .....	35

085. BD-4, Black-Belly, w/mint stamp .....	30
086. BD-4, Black-Belly, c .....	35
087. BD-5, King Elders, w/mint stamp .....	30
088. BD-5, King Elders, c .....	35
•089. BD-6, World Stamp Expo, w/3 mint stamps .....	40
090. no lot .....	

#### NAPEX (NA)

•091. NA-2, NAPEX, m .....	6
092. NA-7, NAPEX, m .....	6

#### Private

093. 1973, CINIPEX, Cincinnati .....	2
094. 1976, FINPEX, m .....	2
095. 1977, Central Wisconsin, m .....	2
•096. 1978, STIPEX Armed Forces Day, c .....	2
097. 1979, GPS-COLOPEX, m .....	2
098. 1979, CINIPEX, sc .....	2
099. 1980, CINIPEX, m .....	2
100. 1984, CINIPEX, sc .....	2
•101. 1986, AMERIPEX (Micronesia), m .....	2
102. 1988, COMPEX, m .....	2

#### ABNCo Archives Series (SOA)

(All mint, with information page.)

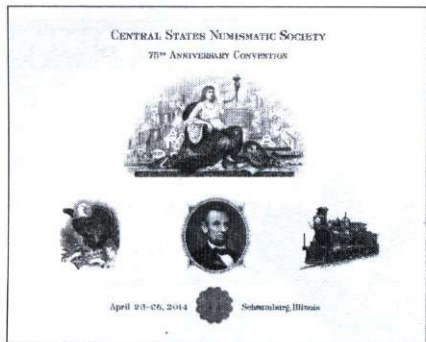
103. SOA 1988(a) The Frontiersmen .....	11
104. SOA 1988(f) Down in the Mines .....	11
•105. SOA 1988(h) Cherubs and Cupida .....	11
106. SOA 1988(k) Allegories of Finance .....	11
•107. SOA 1988(l) A House Divided .....	11
108. SOA 1989(e) At Sea Side .....	11
•109. SOA 1989(h) Conquering the Sky .....	11
110. SOA 1991(l) Children .....	11

#### Miscellaneous

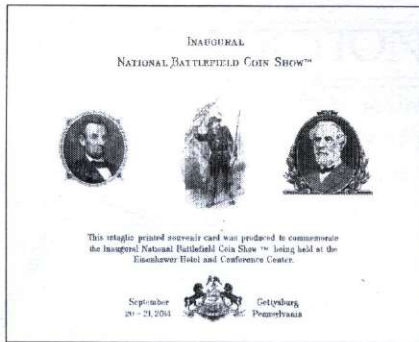
111. BEP Bookmark (Billion Dollar Showcase), m ..	2
112. 1996 engraved cachet on CAPEX envelope, c ..	3
113. 1999? photo of Spider Press, m .....	3
114. 2006 Ashton Potter promotional sheets, m/c ..	3
•115. ABNCo? "\$100"(3"x2.5") intaglio, card, m ..	3
•116. ABNCo 1994 Annual Report, m .....	3
117. ABNCo 6 different greeting cards, w/env, m ..	8
118. ABNCo Strip of 4 logos on tape, m .....	2
119. Booklet, <i>Engraved Stationery Manufacturers</i> , m ..	3
120. Booklet, <i>Oberthur Fiduciaire</i> , m .....	6
121. Book, Baxter: <i>Printing Postage Stamps by Line</i> <i>Engraving</i> , hb .....	9
122. Book, Hessler: <i>Comprehensive Guide to U.S.</i> <i>Paper Money</i> , hb, m .....	42
123. Book, Hessler: <i>U.S. Essay, Proof and Specimen</i> <i>Notes</i> , hb, m .....	21
124. White Ace, 10 blank album pages, m .....	5
125. White Ace, 152 album pages w/mounts (1939- 1981) .....	60

**Auction No. 37: Bids due 30 JULY 2016.**





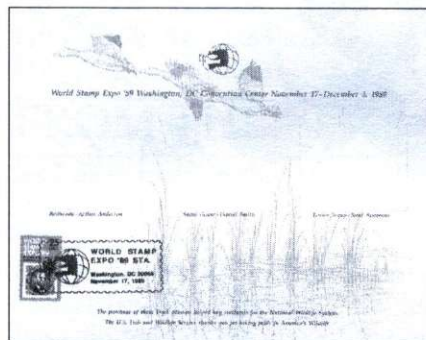
077



079



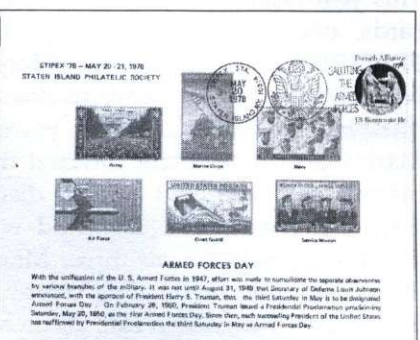
082



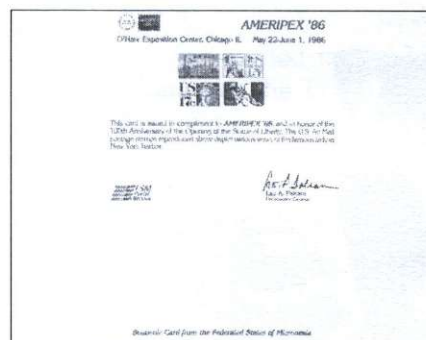
089



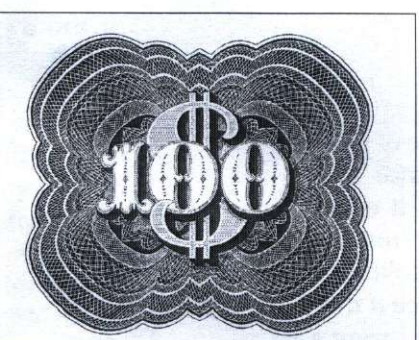
091



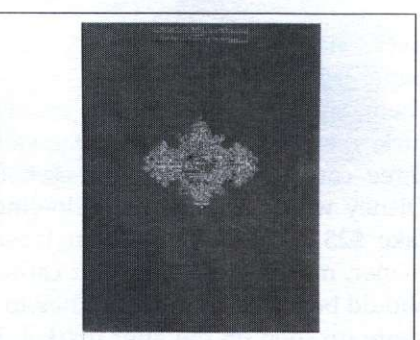
096



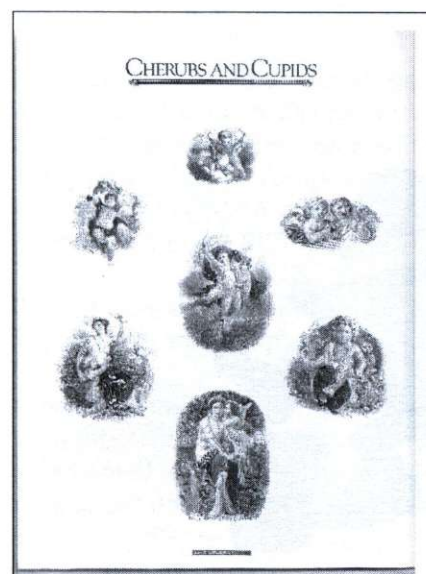
101



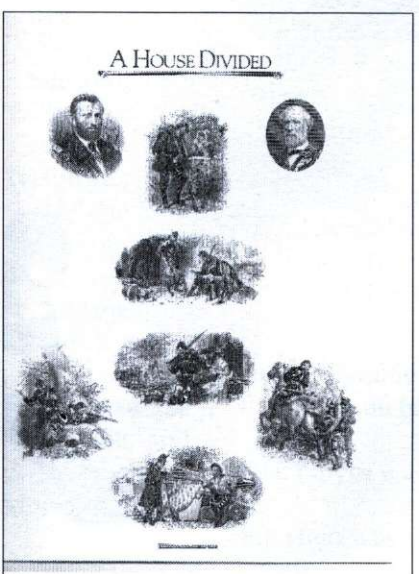
115



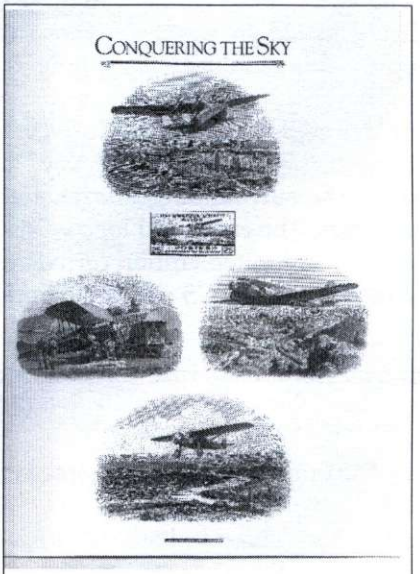
116



105



107



109

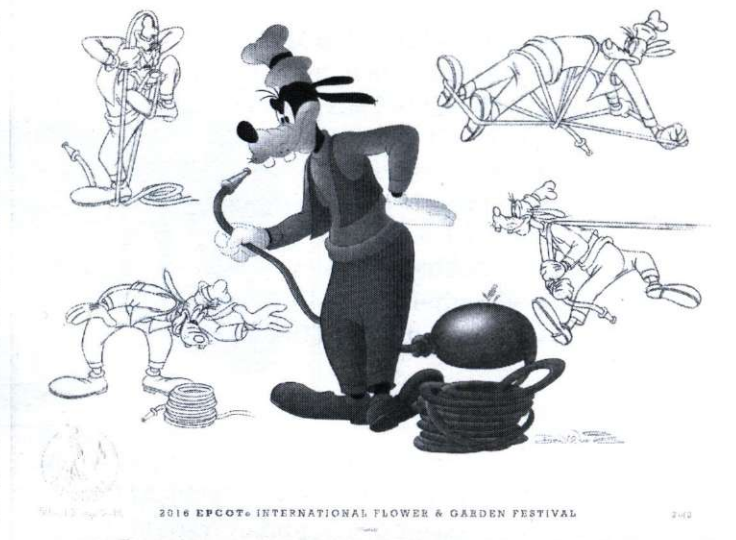


Every spring Disney produces the Flower and Garden Festival at Epcot. They bring in noted speakers for seminars. There is a very nice butterfly house. The gardens are spectacular. On the weekends Disney has concerts from pop music icons from the past. My wife and I went out last month to hear Peter Noone and Herman's Hermits.

This year Disney produced these three 10 X 8 cards, one for March, April, and May, for FREE! That is for yearly pass holders. John and Nancy Wilson, SCCS members, discovered this giveaway and was at Epcot yesterday with Mark Lighterman. Mark directed them to the place to ask for a card, and he discovered all three cards were available, and with a little sweet talk, they got all three. Mark sent me these scans. Beside the vivid color and the line drawings of the garden fun, all three cards are blind embossed in the left lower corner with a Disney logo.

Every six months there is a group of Florida paper collectors who meet in Orlando for a luncheon and a show and tell. In my envy at their luck, we were all speculating the value of these three cards on the after market. Since it is Disney which has its own following, it might take \$25 a card to pry them loose from an owner, maybe more. Souvenir cards collectors should be on the look out at Ebay to see if they show up soon on the after market. If I were a pass holder, I would be out there tomorrow looking for those cards. I suggested to Linda that we could get passes, but she said it would come out my limited stamp budget!

[In the cards (at right, reduced), the central image—Donald, Goofy, Mickey—are in full color. The surrounding images are black line drawings. The embossed logo is shown below. As private, limited edition cards, they will not be listed in the SCCS numbering system. Ed.]





## PRICES REALIZED: S.C.C.S. AUCTION NO. 36 William Kriebel

This auction brought out only nine bidders. Maybe it was too close to IRS reckoning day! It may also suggest that the B and PS cards are already in most

members' collections. I don't think the minimums were a factor. If you do, please tell me! Thanks.

Lot.....Realized	224 .....	wd	319 .....	3
003 .....	108	226 .....	95	351 .....
010 .....	2	228 .....	wd	
066 .....	6	229 .....	31	
194 .....	50	230 .....	260	
211 .....	14	247 .....	25	
213 .....	11	258 .....	5	
218 .....	12	285 .....	5	
219 .....	11	313 .....	5	

## FROM THE BEP'S "RESOURCES"—2

William Kriebel

As I mentioned in the last issue, I will attempt to show some of the items that are included on the BEP website ([moneyfactory.gov](http://moneyfactory.gov)) under "Resources/Image Gallery/Engravings" and "Miscellaneous Products." In most cases, I have no idea of the size of the original items shown.

Christian Wilhelm Rost (1824-1896), born in Lahr, Germany, studied in London and Paris before he came to the U.S. in 1856. He was employed by G.E. Perrine by 1865, and from 1868 to 1878 was with the National BNCo. He remained there after its consolidation with ABNCo. Presumably, was later with the BEP.

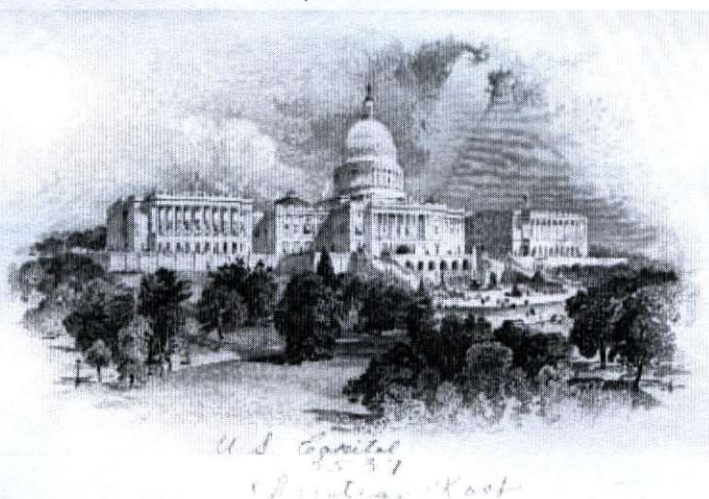
Angelo Delnoce was the son of Luigi (Louis) Delnoce. According to Hessler (*The Engraver's Line*), he worked for ABNCo, and was arrested in 1893 for counterfeiting Argentine bank notes. No information on his employment at BEP.

Charles M. Chalmers (next page, middle), joined ABNCo on 8 December 1922, "where among other things he engraved the *Campbell's Soup Symbol* for the company stock certificate; he remained at ABNCo until 12 July 1934." He then moved to the BEP.

The other two items are simply noted "Marine View" (top) and "Ship's Crew List" (bottom).

Louis Sartain Schofield (1868-ca. 1938) began his apprenticeship at the Bureau in January 1888, and was named an engraver in June 1893. He engraved almost 100 postage stamps and retired in 1932.

Following page:



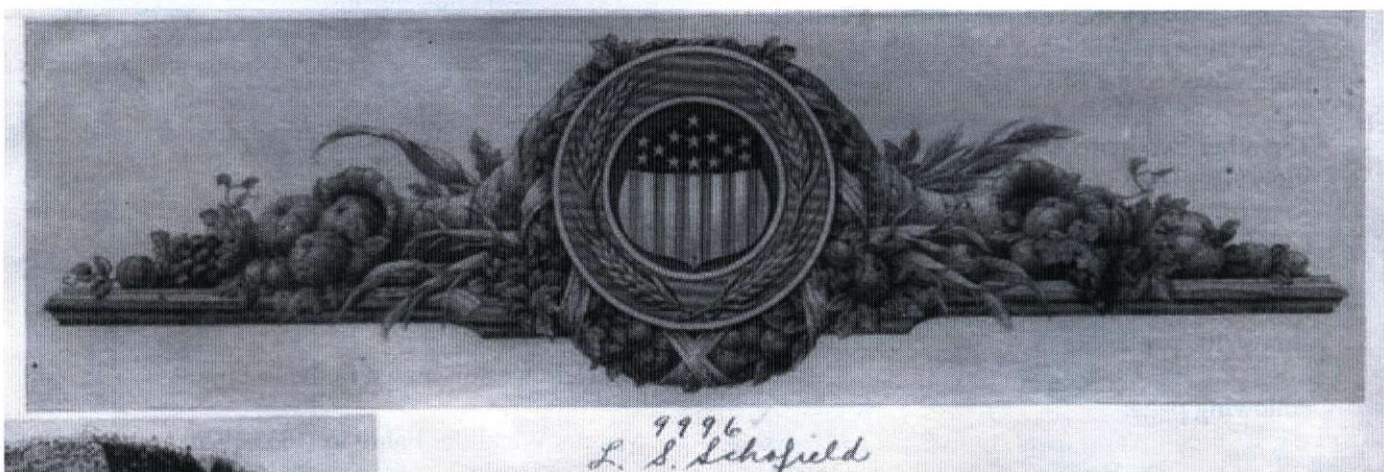
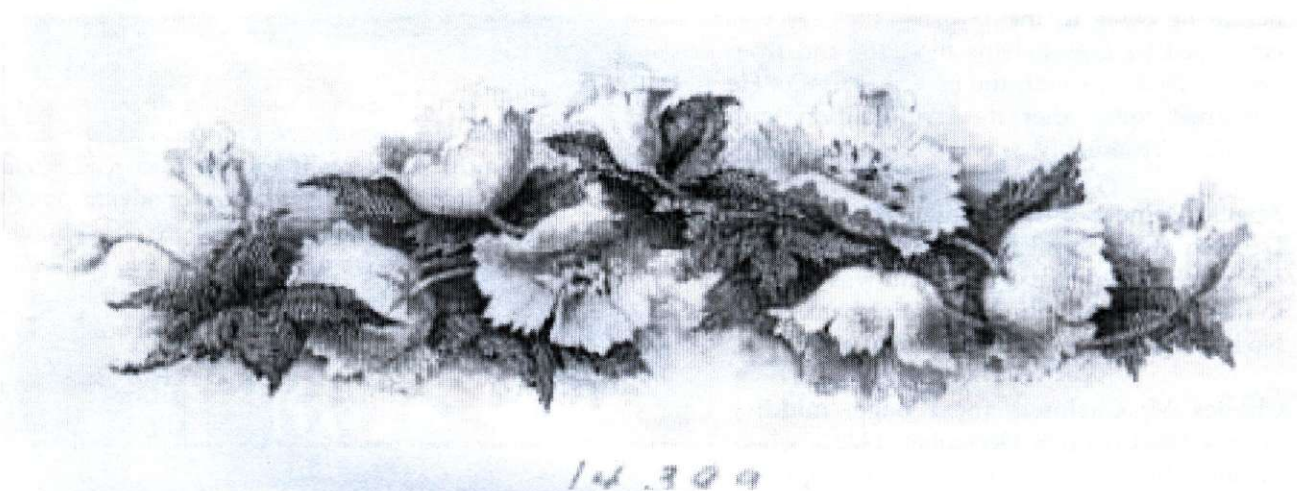
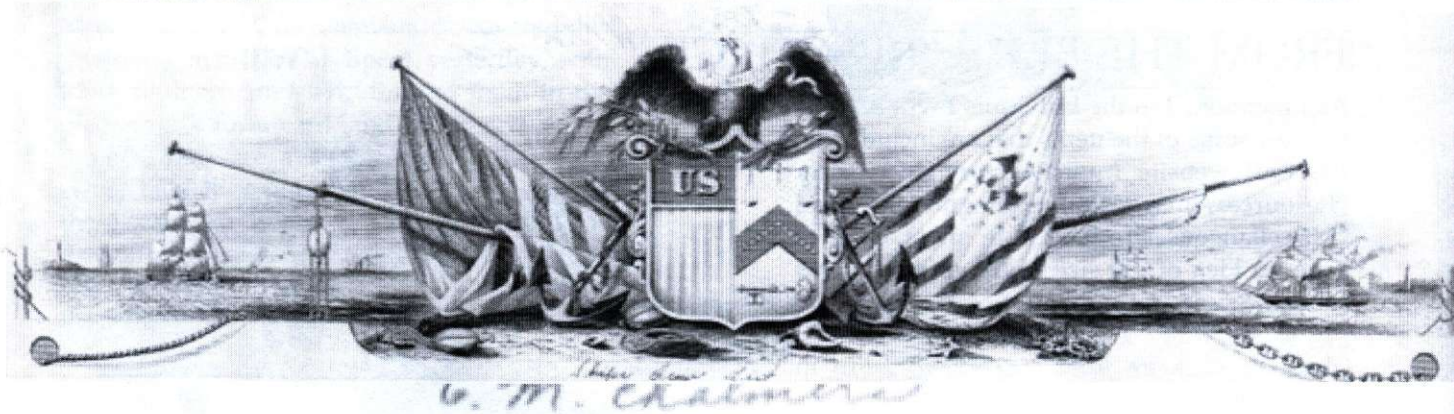
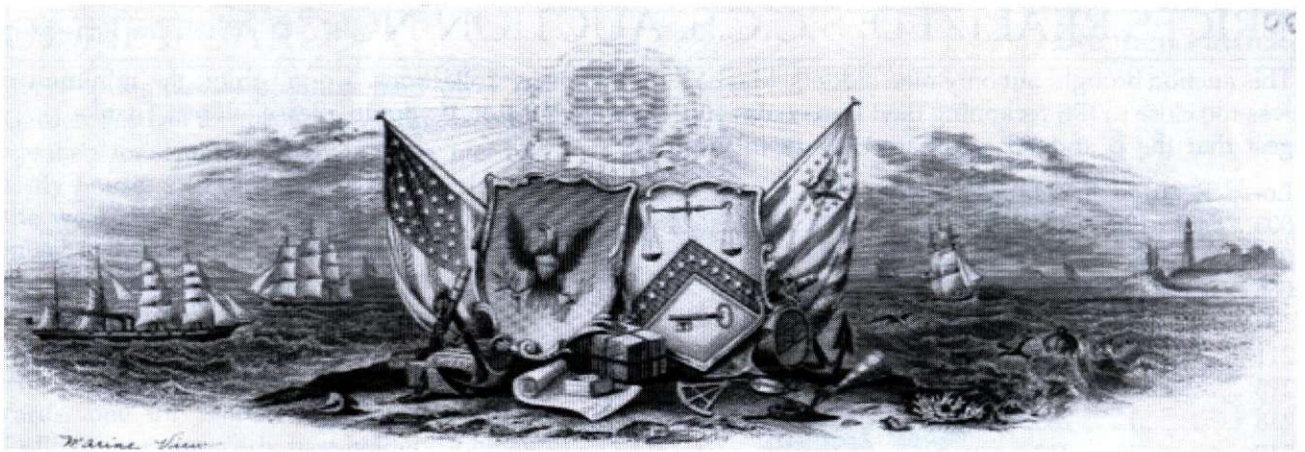
George Smillie and Charles Burt were discussed in the last issue (p.15).

F.H. Noyes was engraving at the Bureau in 1877.

E.J. Hein was discussed in the last issue.

Marcus Wickliffe Baldwin (1853-1925) was appen-









W. H. BULLY

4300

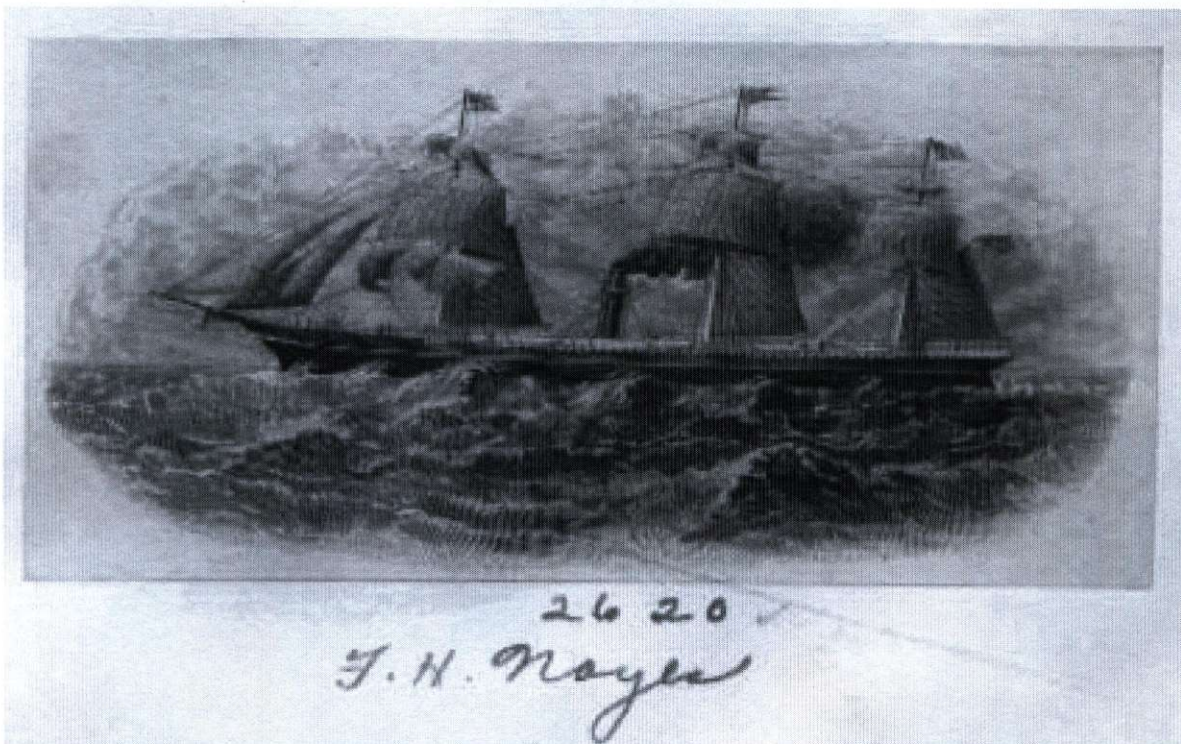
H. F. C. Smilie



Columbia

23495

Chas. Burt



2620

F. H. Noyes



ticed at ABNCo under Louis Delnoce and Alfred Jones. In 1880 he formed Baldwin, Gleason & Co. in NYC. From 1891 Baldwin engraved privately and continued to do so after he joined the Bureau in 1897. He retired from the BEP in 1920 and returned to ABNCo.

Charles Skinner (1841-1932), following work as a



10320.1  
E. J. Nevin



5884  
M. W. Baldwin



10513.1  
E. J. Nevin





9843 ✓  
M. W. Baldwin



2979 ✓  
Chas. Skinner



6920+  
H. L. Charlton



2943 ✓  
L. V. L.  
DEC 17 1890  
Electroplated Souvenir Cards Made from Dies  
J. H. P.

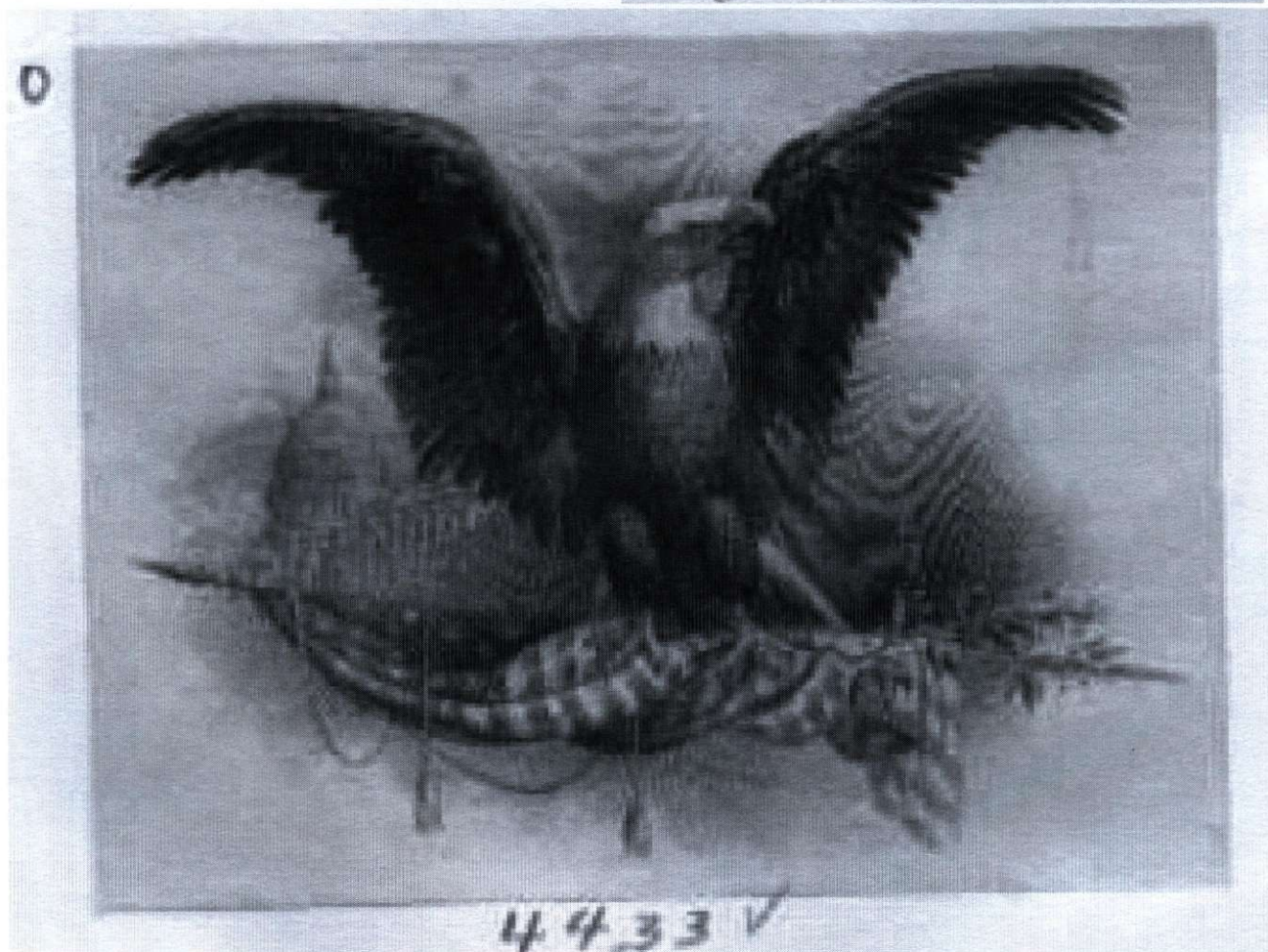


book illustrator in NYC, he joined ABNCo in 1864 and moved to Continental BNCo and remained after consolidation and retired in 1911. He engraved the ABNCo logo (eagle facing left) in 1885. [Hessler makes no mention of his work at BEP.]

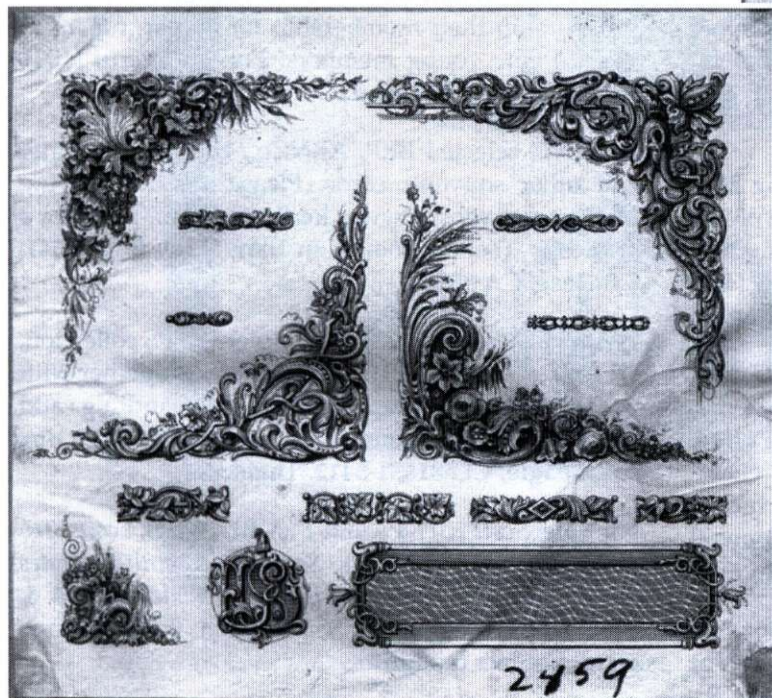
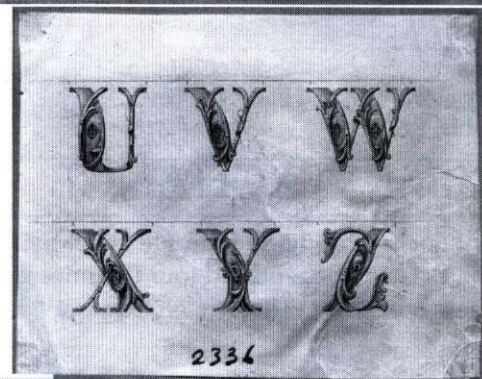
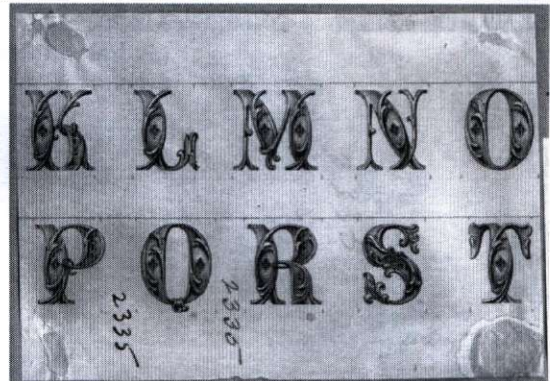
Harry L. Chorlton (1869-1955) engraved for the Franklin BNCo from 1884 to 1886, and sometime later joined the Homer Lee BNCo. In 1894 he moved to the Bureau.

[As you will note, some of the work is only identified by a number, i.e., no reference to the engraver. As I have said earlier, I have no idea of the actual size of most of these images.]

(to be continued)







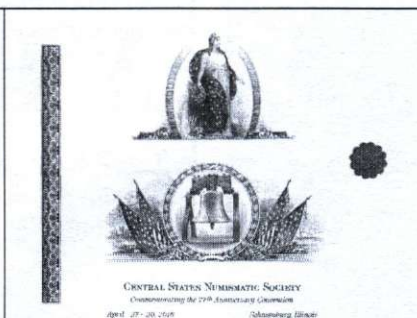


# VISUAL REFERENCE UPDATE

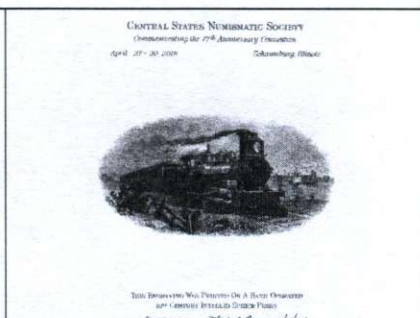
William Kriebel



APS-54 AmeriStampExpo 20160129  
Athens, GA 8"x6"



MB-70 CSNS 20160427  
Central States Numismatic Society  
Schamburg, IL 10"x8"



MB-71 CSNS 20160427  
Central States Numismatic Society  
Schamburg, IL 10"x8"



N-28 Annual 20160701  
Centenary of the National Park Service  
Philadelphia, PA 10"x8"



JA-25 20160429  
27th International Coin Convention  
Tokyo, Japan

## MEMBERS EXCHANGE

Membership

**Wanted:** Your free ad here! Mail ("e" or "snail") to the Editor. Ads will be repeated four (4) times unless you request otherwise. There is NO charge for this service!

**For Sale:** Souvenir Cards - BEP, USPS, UN, PPU and ASDA, mint and canceled. No. 10 SASE (86¢) for lists. **Stephen Goceliak** (831), P.O. Box 157, Fords, NJ 08863.

**For Sale:** Washington Chapter One is offering 2015 NAPEX engraved, two-color souvenir cards (W-75), \$6 mint, \$10 show canceled. Additional computer-generated color cards available. Send a SASE (47¢) for the full-color list. **John Shue**, 1314 Darlington Street, Forestville, Maryland 20747-1909.

**For Sale:** BEP, ABNC, Union, Duck, USPS, Bean, UN, APS, ASDA, SCCS, Chapter, Event, **Hand-Pulled**. Mint, Show Canceled. Also, USPS Max cards. **Discounts to 50%**. Postage, insurance included. Lists: **Stan Miller** (647), PO Box 58, Hopewell Junction, NY 12533; or [aftertheblue@optimum.net](mailto:aftertheblue@optimum.net)

**Wanted:** Philatelic Truck related material wanted by exhibitor. Also: NPM Card (SO-164) signed and/or canceled. Please contact: **Gregg A. Hopkins, Sr.**

(2031) (t)602.954.8175; (f)602.957.2910; or (e) [In1stPlace@cox.net](mailto:In1stPlace@cox.net)

**Wanted:** Know a young person (under 25) who would like to join the S.C.C.S.? Let me know I will sponsorship their membership for a year, for up to five (5) new young members! **Lorne Lavertu** (153), [lornelavertu@comcast.net](mailto:lornelavertu@comcast.net)

**BUYING** selected BEP, ABNCo., USPS, Forerunner and other souvenir cards. Please see the "Buying List" on my website [www.kenbarr.com](http://www.kenbarr.com) or write for a hardcopy. (Selling too!) **Ken Barr**, P. O. Box 32541, San Jose, CA 95152

**WANTED:** PS3 and PS9 to complete USPS collection. Please send mint or cancel information together with price including postage, shipping, handling and insurance to **Vince Jones** (SCCS #1140) at P. O. Box 5412, Eagle, CO 81631-5412. Thanks!

**For Sale:** Scott 2011 Volume 1 (A-B), \$40.00; Scott 2016 Volume 1 (A-B), \$80.00; Scott 2015 United States Specialized, \$75.00; Collectors Club Philatelist 2014 & 2015 (six issues each), \$35.00 each year. Postage extra. Contact the **Editor**.



Saturday, 7 May, I met with the Florida paper collectors group. John Wilson brought some extra Mike Bean cards from the Central States Numismatic Society. I bought one for me and one for Carlos Guffain.

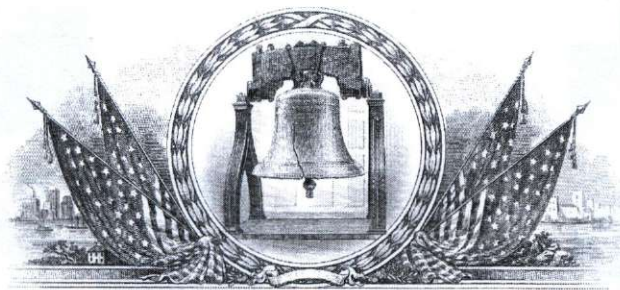
At the meeting I met former SCCS member Wendell Wolka, who recently moved from Wisconsin to Florida. He informed me that the image of *America* was done by Toppan and Carter before the Civil War. In 1861, Keatinge and Ball from Richmond, VA, ordered some paper currency from the National BNCo and, in an act of possible treason, the notes were delivered. An interesting aspect of the vignette is that it is the same one used for the statue on top of the Capitol building. When the statue was authorized, Jefferson Davis objected to the liberty cap and asked the sculptor to put a helmet on *America*.

Other changes were made for the Confederate note. The bars on the shield were reduced to three instead of thirteen. The number of stars on the shield and the garment were reduced. Again the liberty cap was removed as Davis felt that the famous symbol from the French Revolution was not the same as the

Confederate cause who saw themselves as a mature nation. The faces symbol by *America's* feet was also removed, and the image was reversed on the Confederate bill.

[A copy of this card (MB-70) is offered in the current auction (lot 80). The original is 10"x8" and the engravings are in color. Ed.]

◇



CENTRAL STATES NUMISMATIC SOCIETY

*Commemorating the 77<sup>th</sup> Anniversary Convention*

*April 27 - 30, 2016*

*Schaumburg, Illinois*



# SOME FOREIGN CARDS

Greg Alexander

Illustrated here are some cards found on a philatelic chatboard. Some appear to have one or more engravings, but hard to tell.

[The "Penny Black" card (right) would appear to be c.1940. The "International Automobile Salon" card (below, left) is dated 23 April - 3 May 1977, and bears the ESPAMER shield for the show held 7-13 October 1977 in Barcelona (opposite page). I don't know how the shows were related. "STAMP WORLD LONDON 90" (below, right) was held 3-13 May. The two cards on the following page are self explanatory.

In addition, a copy of F1983G (a rare find on the web, where two were recently offered on eBay—no I didn't win either!) is included on page 19. Downloading or scanning material makes it difficult to determine the size of the original. I'd like to show more cards in this Journal, especially if they are or appear to be intaglio printed. Please help if you find something which might be of interest to our membership. Ed.]



PHILATELY'S OLDEST FRIEND

*Contributor  
to the Philatelic Committee of the  
British War Relief Society Incorporated*

SALON INTERNACIONAL  
DEL AUTOMOVIL  
23 ABRIL - 3 MAYO 1977



STAMP WORLD LONDON 90  
ALEXANDRA PALACE 3-13 MAY

12843



DESIGNS BY EDMUND DULAC



DESIGNS  
BY  
HARRISON & SONS



ESSAYS FOR THE 1940 CENTENARY ISSUE

REPRODUCED BY KIND PERMISSION OF THE  
NATIONAL POSTAL MUSEUM



# HERACLIO FOURNIER, S. A. - VITORIA - ESPAÑA



## EXPOSICION FILATELICA DE AMERICA Y EUROPA



OCTUBRE 1977  
BARCELONA

## EXPOSICION FILATELICA DE AMERICA Y EUROPA



OCTUBRE 1977  
BARCELONA



OLFU 76 ELPEX

11-16-10-1976

Nasionale Filateliese  
Uitstalling · Oos-Londen

National Philatelic  
Exhibition · East London

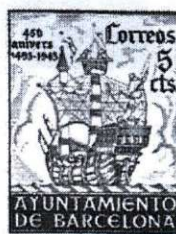


Gedruk deur die Staatsdrukker met die  
goedkeuring van die Posmeester-generaal en uitgereik  
deur die Filatelistigting van Suider-Afrika

Printed by the Government Printer with the  
approval of the Postmaster General and issued by  
the Philatelic Foundation of Southern Africa

1

## *V Centenario del Descubrimiento de América* *Nao Santa María*



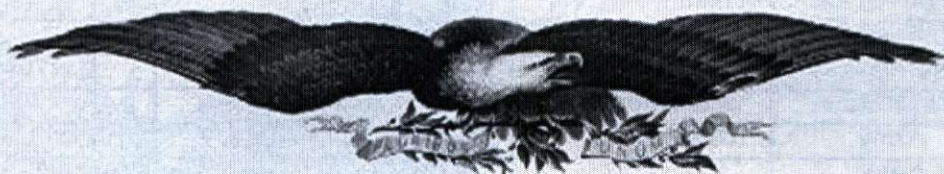
SELLOS DE RECARGO DEL AYUNTAMIENTO DE BARCELONA



*I Exposición Filatélica del Mediterráneo*

1-9 de diciembre de 1990







## SOUVENIR CARDS AVAILABLE AND/OR FORTHCOMING AND MAJOR SHOWS

This listing is intended to alert the membership and serve as an update of the SCCS numbering system. Numbers are shown in “( )” until confirmed and will be deleted when no longer available (“N.A.”) from the initial sources. It does NOT include ASDA or UN cards as this information is NOT readily available in advance of the event. It is as complete as possible and no responsibility is taken for changes. Anyone who can supply missing (“?”) information and/or data concerning availability should please contact the Editor. I also list forthcoming/major shows. Whether or not souvenir cards will be issued at these shows will be reported if and when such information becomes available. **Card sources are listed below.**

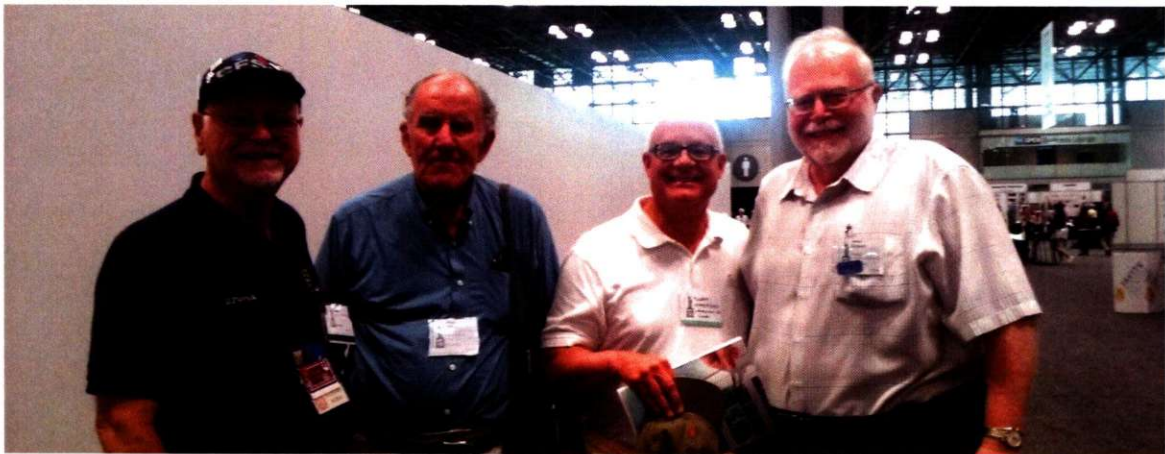
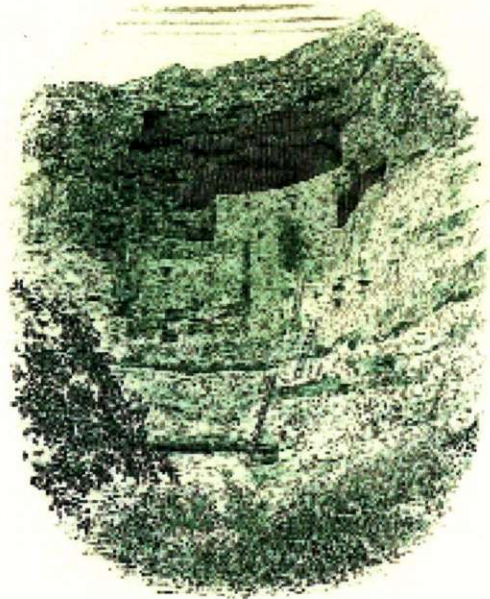
Date	Event	Location	SCCS No.	Source	Cost	Note	Comment
2015							
8 January	F.U.N.	Orlando, FL	B-314	BEP	22.50	1	
13 February	AMERISTAMP	Riverside, CA	APS-52	APS	1.00		
24 March	U.S.S. San Diego	Washington, DC	B-315	BEP	22.50	1	
7 June	NAPEX	McLean, VA	W-74—78	SCCS#1			
7 June	NAPEX	McLean, VA	NA-28	NA			
20 August	STAMPSHOW	Grand Rapids, MI	APS-53	APS	2.50		
1 December	Democracy	Washington, DC	B-317	BEP	22.50		
2016							
7 January	F.U.N.	Tampa, FL	B-318	BEP		3, 4	“Life”
29 January	AMERISTAMP	Atlanta, GA	APS-54	APS	2.50		
27 February	SPRINGPEX	Springfield, VA	W-79—80	SCCS#1			
31 March	“Liberty”	Washington, DC	B-319	BEP		4	
27 April	Central States	Schaumburg, IL	MB-70	see p.15			77th Conv.
27 April	Central States	Schaumburg, IL	MB-71			5	Lottery
24 May	Army	Washington, DC	B-320			6	
	Navy		B-321			6	
	Marines		B-322			6	
	Air Force		B-323			6	
	Coast Guard		B-324			6	
1 July	Annual	Philadelphia, PA	N-28	SCCS	**		**Membership
4 August	STAMPSHOW	Portland, OR	(APS-55)	APS			
9 August	World’s Fair	Anaheim, CA	(B-325)	ANA		3, 4	“Pursuit...”
2017							
5 January	F.U.N.	Ft. Lauderdale, FL					
3 March	AmeriStamp	Reno, NV		APS			
3 August	StampShow	Richmond, VA		APS			

Notes:

1. Celebration of the Opening of the Panama Canal. Subscriptions and B-316, are “Sold Out”.
2. It is my understanding that there will be no NAPEX show because of the World Stamp event in NYC.
3. According to their “Exhibition Schedule,” the BEP will be attending these two events.
4. Prints are \$22.50 ppd., individually, or \$51.00 for the three.
5. Available only at the Central States Numismatic Society show.
6. Similar to set of 2014, undated, different MPCs. \$85 for the five, \$22.50 individual cards.

SOUVENIR CARD SOURCES		
APS American Philatelic Society 100 Match Factory Place Bellefonte, PA 16823-9910 stamps.org	ASDA American Stamp Dealers Association 217-14 Northern Blvd., Suite 205 Bayside, NY 11361 asdaonline.com	BEP Bureau of Engraving and Printing Mail Order Sales, Room 515-M 14th & C Streets, SW Washington, DC 20228 www.moneyfactory.gov (BEP store)
NA NAPEX P.O. Box 1312 Falls Church, VA 22041-1312 www.NAPEX.org	SCCS#1 (Washington Chapter) John S. Shue 1314 Darlington Street Forestville, MD 20747-1909 shue.cachets@rcn.com	SCCS#4 (METRO Chapter) Donald Struyk 18 Chapel Place Wayne, NJ 07470-2701 donastr@optonline.net





Opposite: top, **B-166** with Bridal Veil Falls (left), Mt. Rainer (center) and El Capitan (right); bottom, **B-172** with western view of Grand Canyon (left), Mount Rockwell (top, right) and Mammoth Hot Springs (lower, right).

Above: top, **B-174**, with Niagara Falls (top, left), Yosemite Valley (lower, left), and Montezuma Castle (right); bottom, SCCS officers and former officers met at World Stamp Show in NYC on 3 June 2016: (l. to r.: Steve Patrick, Bill Kriebel, Curt Radford, Art Benjamin.)



